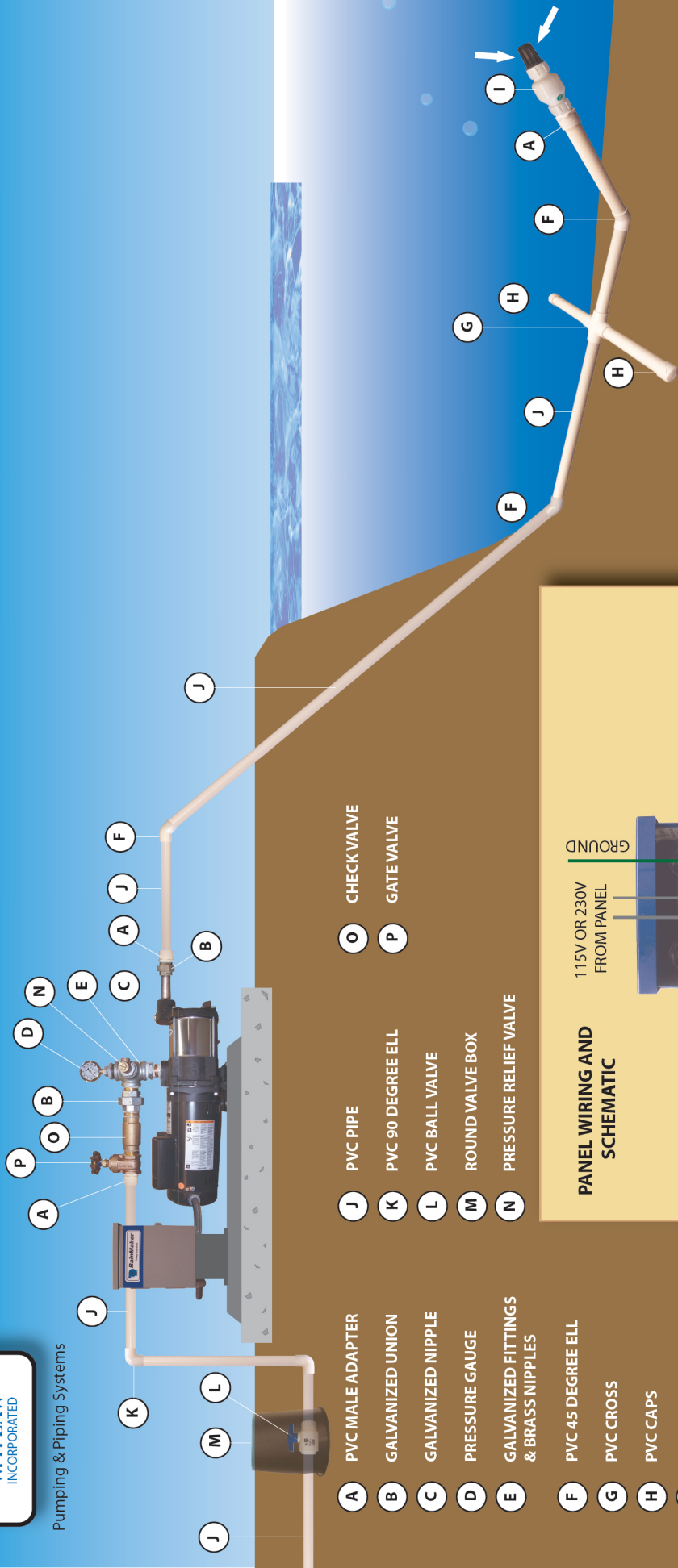




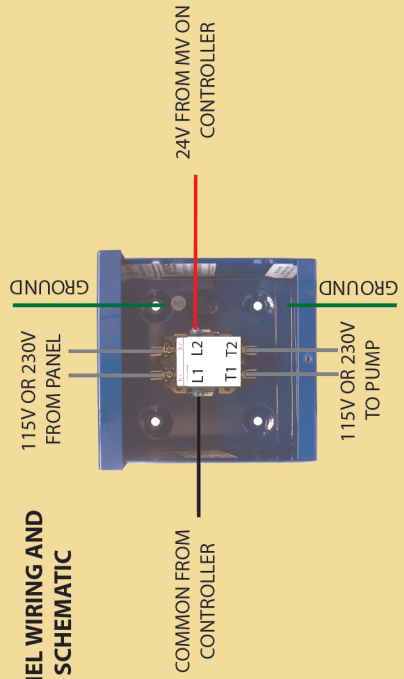
Pumping & Piping Systems

PUMP DETAIL (Typical pump setup)



- A** PVC MALE ADAPTER
- B** GALVANIZED UNION
- C** GALVANIZED NIPPLE
- D** PRESSURE GAUGE
- E** GALVANIZED FITTINGS & BRASS NIPPLES
- F** PVC 45 DEGREE ELL
- G** PVC CROSS
- H** PVC CAPS
- I** FOOT VALVE
- J** PVC PIPE
- K** PVC 90 DEGREE ELL
- L** PVC BALL VALVE
- M** ROUND VALVE BOX
- N** PRESSURE RELIEF VALVE
- O** CHECK VALVE
- P** GATE VALVE

PANEL WIRING AND SCHEMATIC



NOTES :

- LEGS FOR FOOT VALVE STAND - USE PVC PIPE OF SAME DIAMETER AS INTAKE. EACH LEG IS 12" - 18" IN LENGTH (INCLUDES PIPE TO RISER).
- RISER FOR FOOT VALVE IS 12" - 18" LONG.